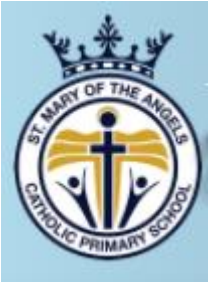




St Mary of the Angels

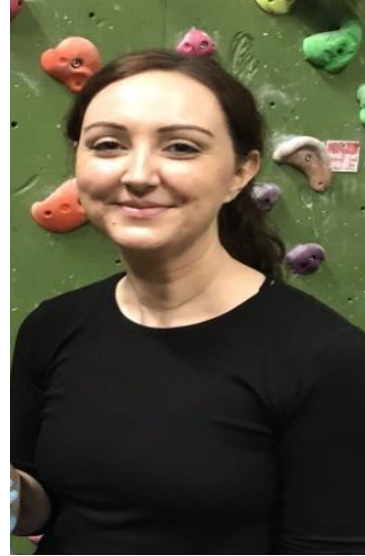
Welcome to Reception



Meet the Teachers



Miss Cunniffe
Sparrows



Miss Keane
Robins

School prayer

Loving Father,
bless our school and fill our hearts with love,
friendship and forgiveness.

Help every child to grow
and achieve the best that they can.
When we find things difficult give us the
courage to carry on.

We thank you for all of our friends and classmates.
Bless our families, our community and all who help
us in our school.

Help us to follow in your footsteps.

Amen





Our Mission Statement

At St. Mary of the Angels we work together to develop a loving relationship with God and each other, following Jesus in all that we think, do and say.

We aim to provide a broad, balanced and creative curriculum to enable every child to develop their gifts from God and be the best they can be.

Our School Day

Soft start

8.45am-9.00am

9.00am - 3.20pm

Register taken at 9.00am prompt

Children will have lunch at 11.45am

School closes at 3.20pm

Art club: Wednesday until 4.30pm

Please provide a snack

RBA

- The Reception Baseline Assessments have been developed by the Department for Education to assess the starting point of the children in Reception.

The baseline will give generate targets for the children to work on which will inform our teaching.

For more information about the baseline please go to:

<https://www.gov.uk/government/publications/reception-baseline-assessment-information-for-parents>

The Seven Areas of Learning are:

1. Communication and Language
2. Personal, Social and Emotional Development
3. Physical Development
4. Literacy
5. Maths
6. Understanding of the world
7. Expressive arts and design



Our Topics

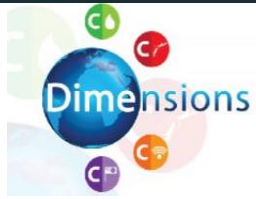
We have a different topic each half term. You will receive a termly Curriculum map setting out our objectives and activities. This will also be available to view on our school website.

This half terms topic is Happy To Be Me.

Our Science topic: Sound Collector

You may find Topics can change direction over the half term as we use ideas from the children to inform the planning.

We have indoor and outdoor activities daily.



Learning Means the World

- Our new **Learning Means the World** curriculum, developed in partnership with Dimensions Curriculum, equips pupils to build knowledge, skills, attitudes and values, through well-planned and resourced cross-curricular theme units which fully cover the National Curriculum.
- **Learning Means the World** puts important world issues like conservation, conflict, culture and communication at the heart of learning and pupils follow four learning pathways:

-
- **EXPLORERS** Nursery & Reception 3 – 5 years (Foundation Stage)
- **PATHFINDERS** Year 1 and Year 2 5 – 7 years (Key Stage 1)
- **ADVENTURERS** Year 3 & Year 4 7 – 9 years (Lower key Stage 2)
- **NAVIGATORS** Year 5 and Year 6 9 – 11 years (Upper Key Stage 2)



Our Learning Pathways

Our learning pathways are individual, yet inter-connected, leading students on a journey of discovery!



EXPLORERS

'HAVE A GO!'

- Experimental
- Curious
- Confident
- Co-operative

Learning Pathway Skills

Explorers

Foundation
Stage
3 – 5 years



Explorers

Experimental

I can find out how things work.

I can explore different ways of doing things

I can investigate using resources provided for me.

Curious

I can ask my own questions.

I am eager to learn new things.

I can identify things that interest me.

Confident

I can make mistakes without worrying about failure.

I can help others with their learning.

I have a positive attitude to my learning.

Co-operative

I can take turns.

I can explain my ideas to others.

I can work as part of a group making a positive contribution.

Our 'Learning Means the World' curriculum is underpinned by a whole school focus on four world issues – The '4 C's':



COMMUNICATION



CULTURE



CONFLICT



CONSERVATION



COMMUNICATION - Listening, Talking Confidently, Exchanging Ideas, Explaining Clearly



CONFLICT – Sharing, Behaving Responsibly, Keeping the Peace, Stopping Fighting



CULTURE – Friendship, Respect, Understanding, Tolerance



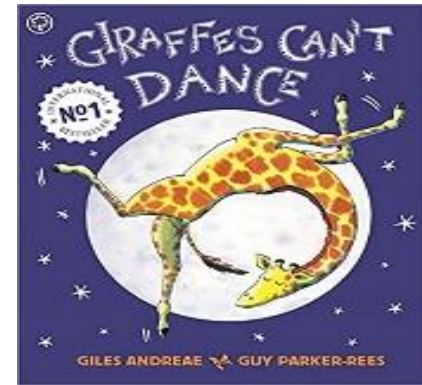
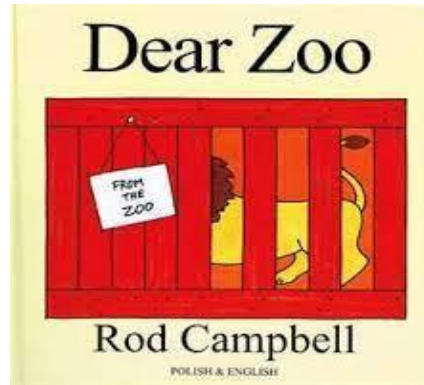
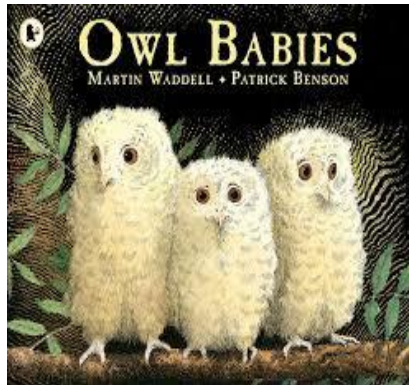
CONSERVATION – Looking After Things, Being Thoughtful, Developing Global Awareness, Thinking Big

Our Topics this Year

Autumn 1	Autumn 2	Spring 1	Spring 2	Summer 1	Summer 2
Happy To Be Me Sound Collector	Christmas Celebration Biscuit Bears	Let's Play The Potting Shed	No Place Like Home Into the Woods	Under the Sea Frozen	Royal Patron! Pupil Voice! Zarg's World

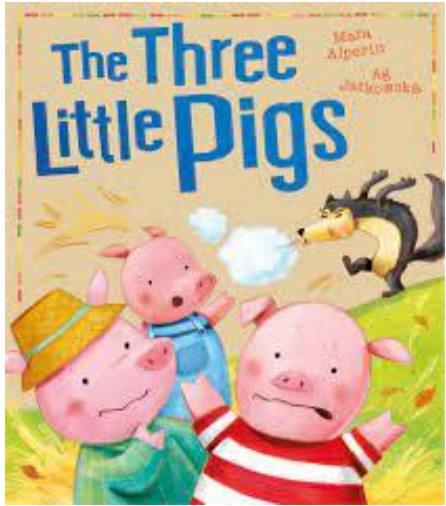
Core Texts

Autumn 1



Core texts

Autumn 2



Relationship and Health Education



Relationships Education and Health Education is statutory in all primary schools in England.

The **Life to the Full** programme is approved by our diocese and was approved by the Governing Body for use in our school following consultation with parents and staff earlier this year.

The **Life to the Full** units will be taught in the Spring Term and you will be informed in advance of the topics being covered and how to find out more information via the parents online portal which you can access via the following link:

<https://www.tentenresources.co.uk/parent-portal/>

Username: st-mary-angel-w2

Password: palace-gardens

Module One: Created and Loved by God

explores the individual. Rooted in the teaching that we are made in the image and likeness of God, it helps children to develop an understanding of the importance of valuing themselves as the basis for personal relationships.

Early Years Foundation Stage:

- Our uniqueness in real terms
- Celebrating differences, talents and abilities
- Looking after and using our bodies
- The necessity of when and how to say sorry
- Jesus' forgiveness and growing up as God's plan for us



Lower Key Stage Two:

- Understanding differences
- Respecting our bodies
- Puberty and changing bodies
- Strategies to support emotional wellbeing including practicing thankfulness
- The development of pupils' understanding of life before birth



Religious UNDERSTANDING



Story Sessions:

Each learning stage focuses on a different Gospel story, which is repeated in various ways over a week, giving rise to times of discussion, imaginative reflection and creative response, for example, in Key Stage One children will hear and reflect on the story of Jesus telling the little children to come to Him and through imaginative reflection will put themselves into the story to experience Jesus' call personally.

In Upper Key Stage Two, the story is that of Jesus calming the storm, and is used to reflect on how whatever might come their way through puberty and beyond, Jesus is with them and will help them.



Key Stage One:

- We are uniquely made by a loving God
- We have differences and similarities
- Key information about staying physically healthy
- Understanding feelings and emotions, including strong feelings such as anger
- The cycle of life from birth to old age



Upper Key Stage Two:

- Appreciation of physical and emotional differences
- A more complex understanding of physical changes in girls' and boys' bodies
- Body image
- Strong emotional feelings
- The impact of the internet and social media on emotional well-being
- A more nuanced and scientific understanding of life in the womb and how babies are made
- Menstruation



Module Two: Created to Love Others

explores the individual's relationships with others. Building on the understanding that we have been created out of love and for love, this unit explores how we take this calling into our family, friendships and relationships, and teaches strategies for developing healthy relationships.

Early Years Foundation Stage:

Unit 2: Personal Relationships

- Different family/friend relationships
- Features of positive/negative behaviour in relationships
- The importance of saying sorry and forgiveness within relationships

Unit 3: Keeping Safe

- Practical ways to stay safe inside and out
- Staying safe around medicines
- People who help us in emergencies



Lower Key Stage Two:

Unit 2: Personal Relationships

- Different family structures
- Activities and strategies for developing healthy relationships with family and friends
- Techniques for managing thoughts, feelings and actions

Unit 3: Keeping Safe

- Online safety
- Teaching on bullying and abuse
- The effects of drugs, alcohol and tobacco
- The crucial role of First Aid in emergency situations



Religious UNDERSTANDING



At the start of each learning stage, we begin with a series of story sessions based on a key Gospel story which provides the religious foundation for the teaching that will follow. For example, through an imaginative retelling of the Prodigal Son, children deepen their understanding of the concept of sin and the importance of forgiveness in relationships.



Key Stage One:

Unit 2: Personal Relationships

- 'Special people' in their lives who they love and can trust
- Coping with various social situations and dilemmas
- The importance of saying sorry and forgiveness within relationships

Unit 3: Keeping Safe

- The risks of being online
- The difference between good and bad secrets
- Teaching on physical boundaries
- The effects of harmful substances
- Some basic First Aid



Upper Key Stage Two:

Unit 2: Personal Relationships

- Strategies for more complex experiences of relationships and conflict
- How to identify and respond to spoken and unspoken pressure
- The concept of consent
- Further teaching on how our thoughts and feelings impact on how we act

Unit 3: Keeping Safe

- Risks of sharing and chatting online
- A more complex understanding of different forms of abuse
- How drugs, alcohol and tobacco can negatively affect people's lifestyles
- Essential First Aid such as DR ABC and the recovery position



Personal, Social and Emotional

Helping children to develop a positive sense of themselves and others.

To form positive relationships and develop respect for others.

To develop social skills and learn how to manage their feelings.

To understand appropriate behaviour in groups.

To have confidence in their own abilities.



Communication and Language

Giving children opportunities to speak and listen in a range of situations.

To develop their confidence and skills in expressing themselves.

Involves giving children experiences in a language rich environment

Physical

PE days are on: Tuesday and Wednesday
Involves children being active.

Helps children to develop their coordination,
control and movement.

Children are helped to understand the
importance of physical activity.

Children are helped to make healthy choices in relation to
food.



Understanding of the World

The children will be making sense of their physical world and their community.

Finding out about people, places, technology and the environment.





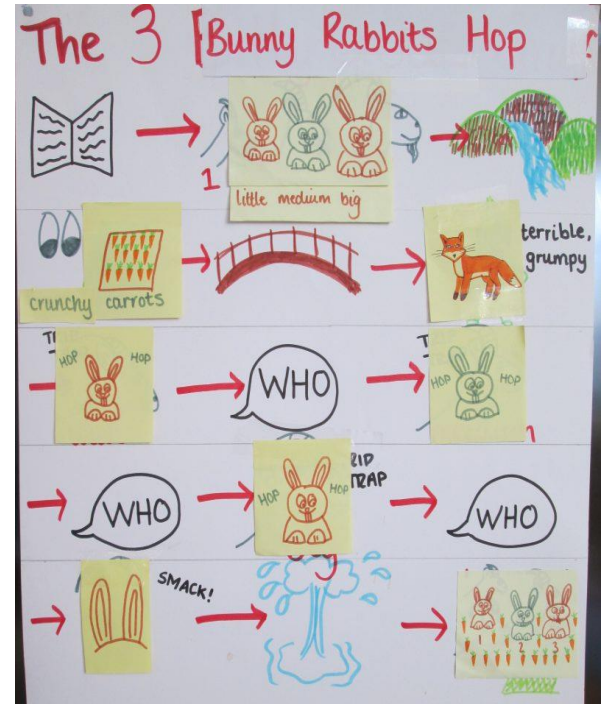
Talk4Writing

Literacy

Encouraging children to link sounds and letters to begin to read and write.

To give children access to a wide range of reading materials to ignite their interest.

Literacy focus will be based on books relating to our current topic, and activities will be linked to this.



Phonics

We use ELS to teach phonics.

It is a systematic, synthetic phonics (SSP) programme that teaches children a variety of skills needed for both reading and writing.



ELS Term-by-term Progression

Reception Autumn 1: Phase 2

Week 1	Week 2	Week 3	Week 4	Week 5	Week 6
/s/ <s> /a/ <a> /t/ <t> /p/ <p>	/i/ <i> /n/ <n> /m/ <m> /d/ <d>	/g/ <g> /o/ <o> /c/ <c> <k>	/k/ <ck> /e/ <e> /u/ <u> /r/ <r>	/s/ <ss> Assess and review week R:1	/h/ <h> /b/ /f/ <f> <ff> /l/ <l> <ll>
	I, the, no	put, of, is	to, go, into	pull	as, his

Reception Autumn 2: Phase 3

Week 1	Week 2	Week 3	Week 4	Week 5	Week 6
/j/ <j> /v/ <v> /w/ <w> /ks/ <x>	/y/ <y> /z/ <z> <zz> /kw/ <qu> /ch/ <ch>	/sh/ <sh> /th/ <th> (voiced and unvoiced) /ng/ <ng> /nk/ <nk>	/ai/ <ai> /ee/ <ee> /igh/ <igh> /oa/ <oa>	-es (where there is no change to the root word) Assess and review week R:2	Review week R:3
he, she, buses	we, me, be	push	was, her		my, you



Bug Club

Reading at St Mary of the Angels

Guided reading will take place once a week.

Children read a new book in a small group with a teacher focus.

Children will bring home a book to share.

Children must read with an adult every night (5-10 minutes) and sign their Reading record.

New books will be given on Fridays.

<https://www.activelearnprimary.co.uk/login?>



Writing at SMA

The children will learn to write the new sounds /phonemes learnt.

They will learning how to form letters.

They will write for a purpose: Lists, captions, letters, notes etc.



Mathematics at SMA

They will develop and improve their skills in counting.

Understand and use numbers.

Calculate simple addition and subtraction problems.

Describe shapes, spaces and measures.

<https://whiterosemaths.com/homelearning/>



Online Journals

Seesaw is a secure online Learning Journal to record photos, observations and comments, in line with the Early Years curriculum, to build up a record of your child's experiences during their time with us. This system allows us to work with parents and carers to share information and record the children's play and learning in and outside of the classroom.

How does Seesaw work?

Seesaw provides each individual child with their own Learning Journal held online. Parents and carers are given their own log-in. All our staff are given a secure log-in. They can then upload observations, photos or videos; recording children's achievements and assessing their learning in reference to the EYFS curriculum.

Parents can change their settings so that an email is then automatically generated informing them when an observation has been added so they can have a look and add any comments of their own.



Seesaw

Who can access Seesaw?

This access is for parents only. We ask that you do not share log in with anyone else.

How can I view my child's Learning Journals?

Once logged in, you will see your child's observations on your home screen in a list – selecting any one of these will open up the observation for you to look at. You may add comments in the box at the bottom of the observation if you would like to – and we would love to receive such comments!

How do I know that my child's Learning Journal has been updated?

The system will automatically send you an email when an observation for your child has been added.

Who can access my Child's Learning Journal?

At school we have access to all of the children's Learning Journals. The only other people that can see your child's account will be yourselves. If your child is featured in a group observation, their photo may appear in another child's Learning Journal.

We really hope that you enjoy using Seesaw and that it helps to keep you feeling informed about your child's learning. If you have any questions or problems using Seesaw then please let us know.

Foundation Fun day Friday 8th October



Our School Website

Mrs Wilson (Headteacher) will email a bi-weekly newsletter that contains updates. These can also be found on our school website, www.stmaryangels.co.uk



What you will need for the day

Every day the children will need their book bag.

Return their books on a Friday.

A water bottle as the drinking fountains are out of use for health and safety.

A summer hat if it is hot or a winter hat if it is cold.

Please do not send in an umbrella with your child.

Come in your PE kit on Tuesday and Wednesday

Please name all uniform.

Thank you

