

Road Safety Assembly



St. Mary of the Angels
Catholic Primary School



City of Westminster

Shrewsbury Road

BEFORE



AFTER



Shrewsbury Road

Future scheme
outside pupil
entrance



School Street



A School Street is a special Pedestrian and Cycle Zone (PCZ) which is created outside a school's main entrance during term-time.

Monday to Friday: 8:30am to 9:30am and 2:45pm to 3:45pm

Creating more space to walk, cycle or scoot.

Blue badge and White badge holders are allowed as well as emergency vehicles

- Wait on the pavement
- Continue to use safer places to cross
- Look both ways to cross the road

The Green Cross Code

The Green Cross Code is a guide to help pedestrians cross the road safely

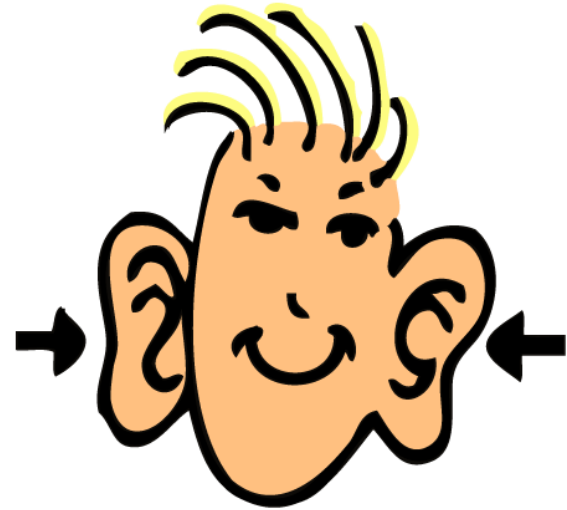
Find a safer place to cross



Stop just before you
get to the kerb



Look all around for traffic AND listen



Distractions



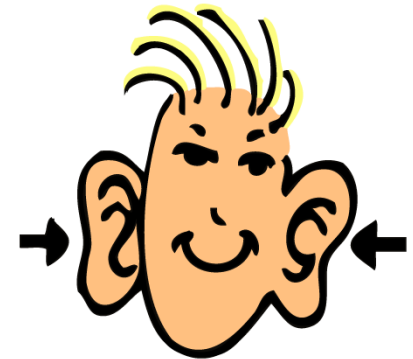
If traffic is coming, let it
pass



When it is safe, go
straight across the road
– do not run, keep
looking and listening
while you cross



+



Playing safely

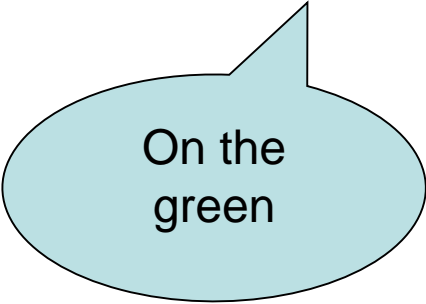
Can you name some safe places to play?



Sports/leisure
centres



Garden



On the
green

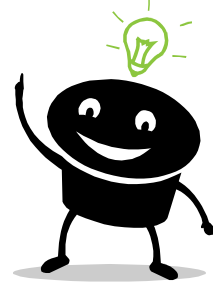


Park



Playground

QUIZ



Q. What does the Green Cross Code help pedestrians do?

A. *Cross the road safely*

Q. What is the **first** rule of the Green Cross Code?

A. *Find a safer place to cross*

Q. Where should you keep a ball or other playing equipment when near to a road?

A. *In a bag*

Q. If using your mobile phone, what should you do with it when crossing the road?

A. *Turn off or pause music and/or put your phone in a pocket*

Q. If you are crossing in-between parked cars, what do you have to check for?

A. *Make sure there are no drivers in the cars (in case they drive off)*

Thank you